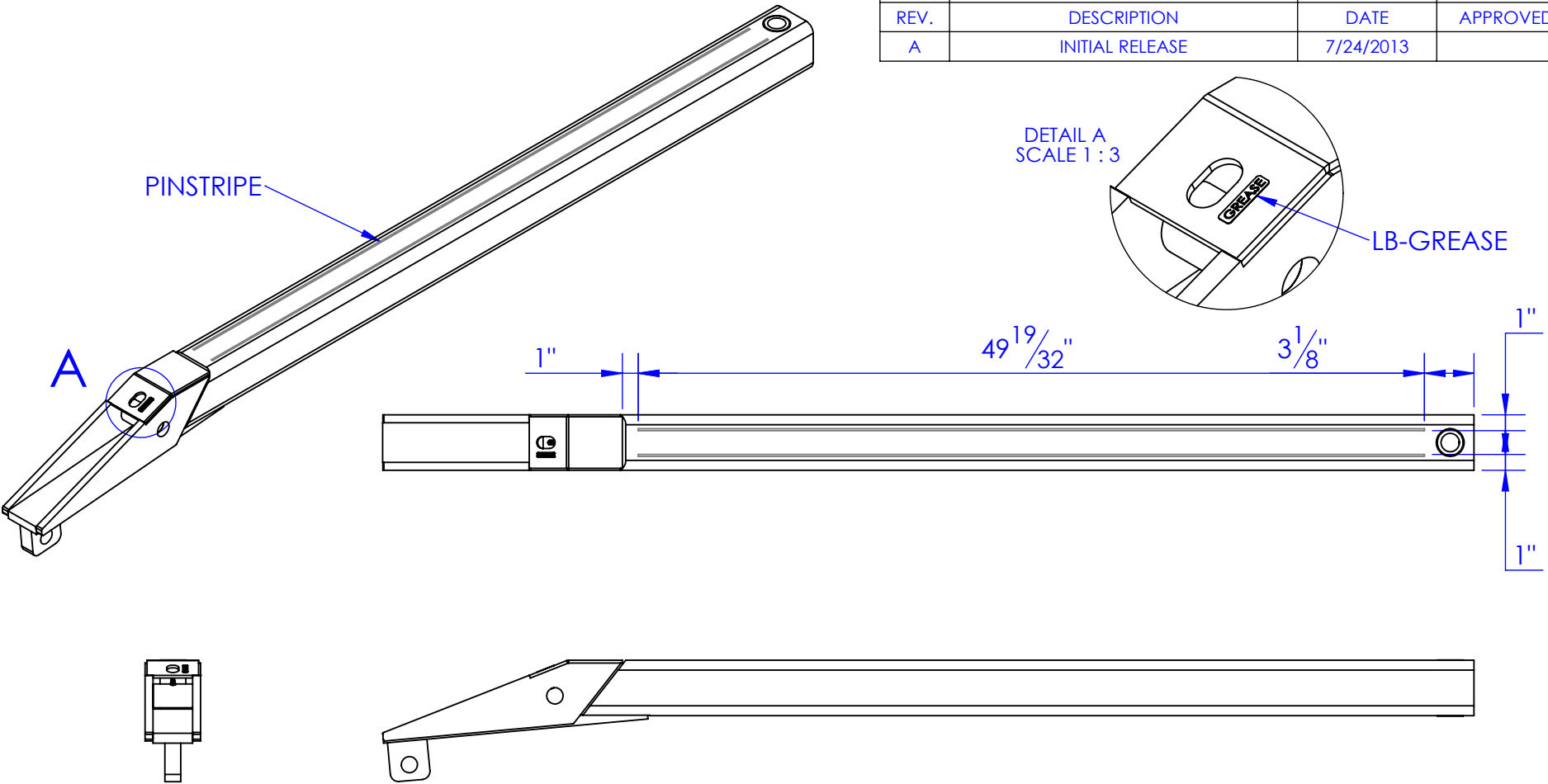


REVISIONS		DATE	APPROVED
REV.	DESCRIPTION		
A	INITIAL RELEASE	7/24/2013	



PROPRIETARY AND CONFIDENTIAL
 THE INFORMATION CONTAINED IN THIS
 DRAWING IS THE SOLE PROPERTY OF TRIPLE
 C INC. ANY REPRODUCTION IN PART OR
 AS A WHOLE WITHOUT THE WRITTEN
 PERMISSION OF TRIPLE C INC. IS PROHIBITED.

DIMENSIONS ARE IN INCHES TOLERANCES: FRACTIONAL ±1/16 ANGULAR: MACH ±1 BEND ± TWO PLACE DECIMAL ±010 THREE PLACE DECIMAL ±005		NAME	DATE
	DRAWN	HEATH	8/5/2013
	PART #		
	ASM #	SUB-ARM50SERIES	
	COMMENTS:		
MATERIAL --	HB-3XX0		
	ARM TRADE		
DO NOT SCALE DRAWING	DRESS		

P.O. BOX 248, SABETHA, KS 66534			
TRIPLE C INC.			
SIZE A	DWG. NO. 11-0003-02	REV. A	
SCALE: 1:10	WEIGHT: --	SHEET 1 OF 1	